

A black and white photograph of an automotive manufacturing plant. In the foreground, a car chassis is visible on a conveyor belt. In the background, several robotic arms are positioned over the assembly line. A large green diagonal shape covers the left side of the image, serving as a background for the text.

Business Cases

# **Automotive Industry**

**SB** Logistics

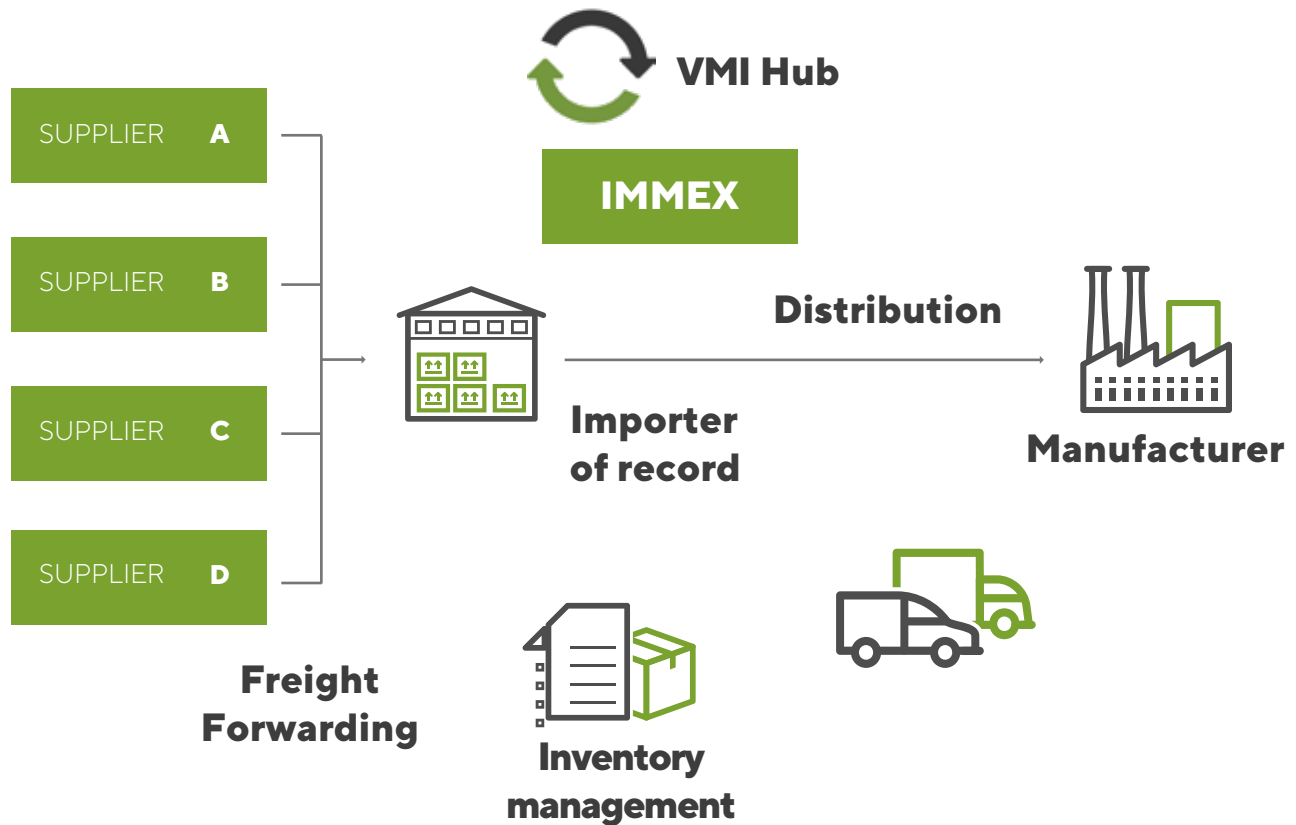
## Automotive Logistics

At SBLogistics we develop solutions in order to improve the supply chain of our customers, we understand the requirements of Automotive industry and in this way we have developed the following logistics solutions:

- Value Added Services at warehouse (Repalletizing, refurbishing, repackaging)
- Integrated Supply Chain Services (International Freight)
- Cargo insurance
- Warehousing and customs clearance service
- Distribution

Key customer's needs	SBLogistics Solution
On-time availability required for materials in production line and improve distribution cost	VMI program under SBL IMMEX License allowed customer to have material available for production
Optimize transportation, optimal cost and service	Dedicated milk runs from European vendors to the SBL Bremerhaven Hub
Specific reworks for material required	SBL Value Added Services <ol style="list-style-type: none"> <li>1) Calibrating material dimensions through specialized measurement tools</li> <li>2) Eliminating rust from material arrived</li> <li>3) Repackaging for meeting final customer needs</li> </ol>
Solid partner that can manage a Non-Resident program service and visual inspection	SBL Value Added Services, Incoming inspection, IMMEX license, X-Dock ops and transport. Leak testing, repackaging

## SBL VMI Program



## Dedicated Milk Runs in Europe

- Multi stop consolidation to collect multiple orders through 43 regular milk runs.
- Optimizing transportation with more frequent pick up's. Optimal cost and service.
- From European vendors located in Germany, France, Great Britain, Italy, Netherlands, Poland, Russia, Spain and Turkey.

**Pick up  
from more  
than 50  
suppliers**

**Optimizing** transportation with more frequent pick up's

→ **Optimal cost and service**



Today we do multi-stop consolidation to collect multiple orders from 68 suppliers in different European cities:



**Austria**



**Spain**



**Italy**



**Germany**



**France**



**Slovakia**



**Czech Republic**



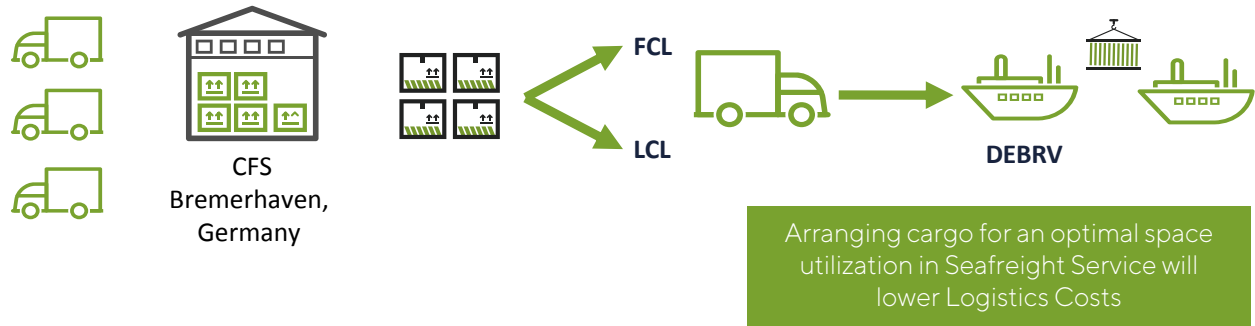
**Hungary**



**Poland**

## CFS and Seafreight Service

Cargo is being consolidated at Bremerhaven WH in order for it to be organized and loaded into a container for an FCL or LCL service



## Direct Customers into VMI & IMMEX

- VMI program under SBL IMMEX License allows customers from Europe and Asia, to have material available for production right next to their customer in Mexico.
- Deliveries to automotive production line





## SBL Value Added Services



## SBL Value Added Services



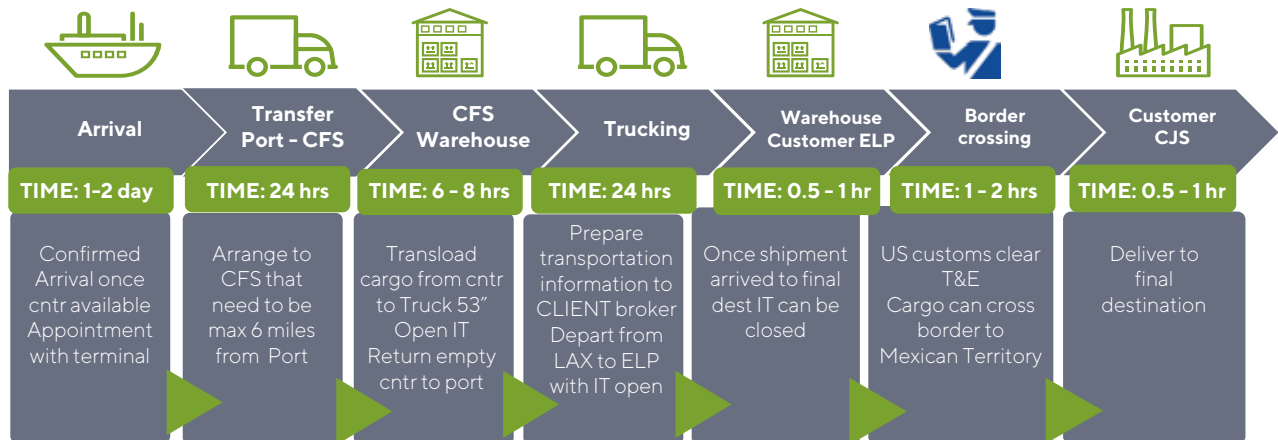
### Bulk Cargo Project

YSM BULK Project

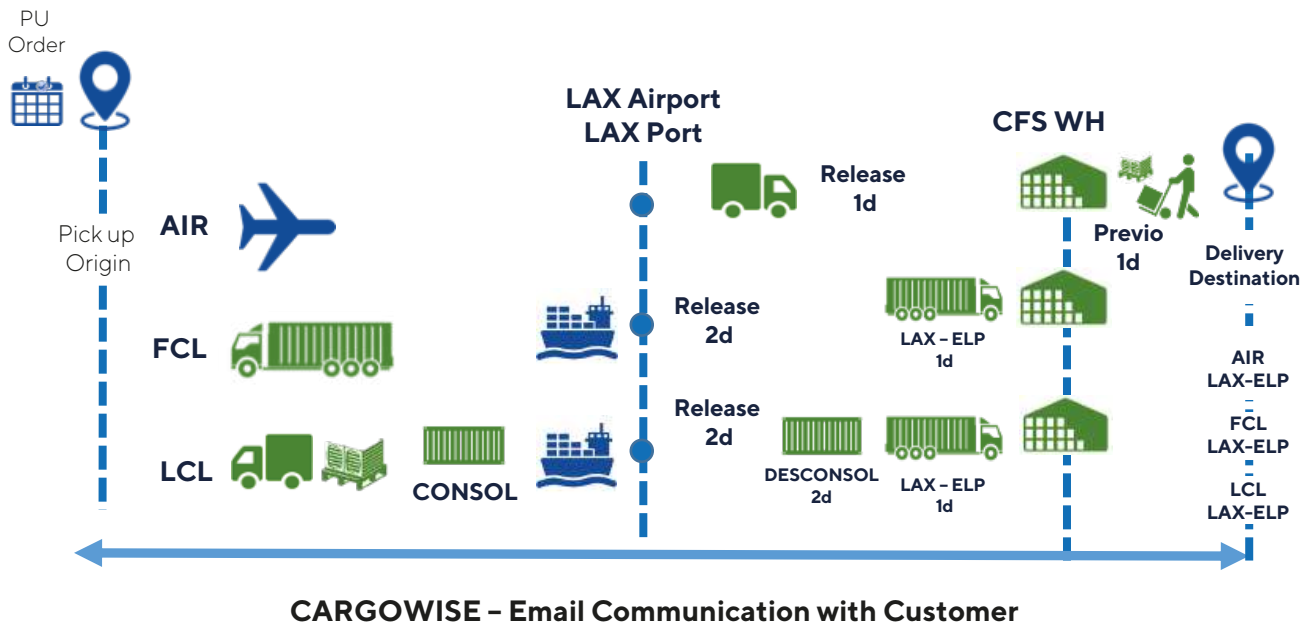
- 17 ITEMS
- 640 TONS
- 800 CBM

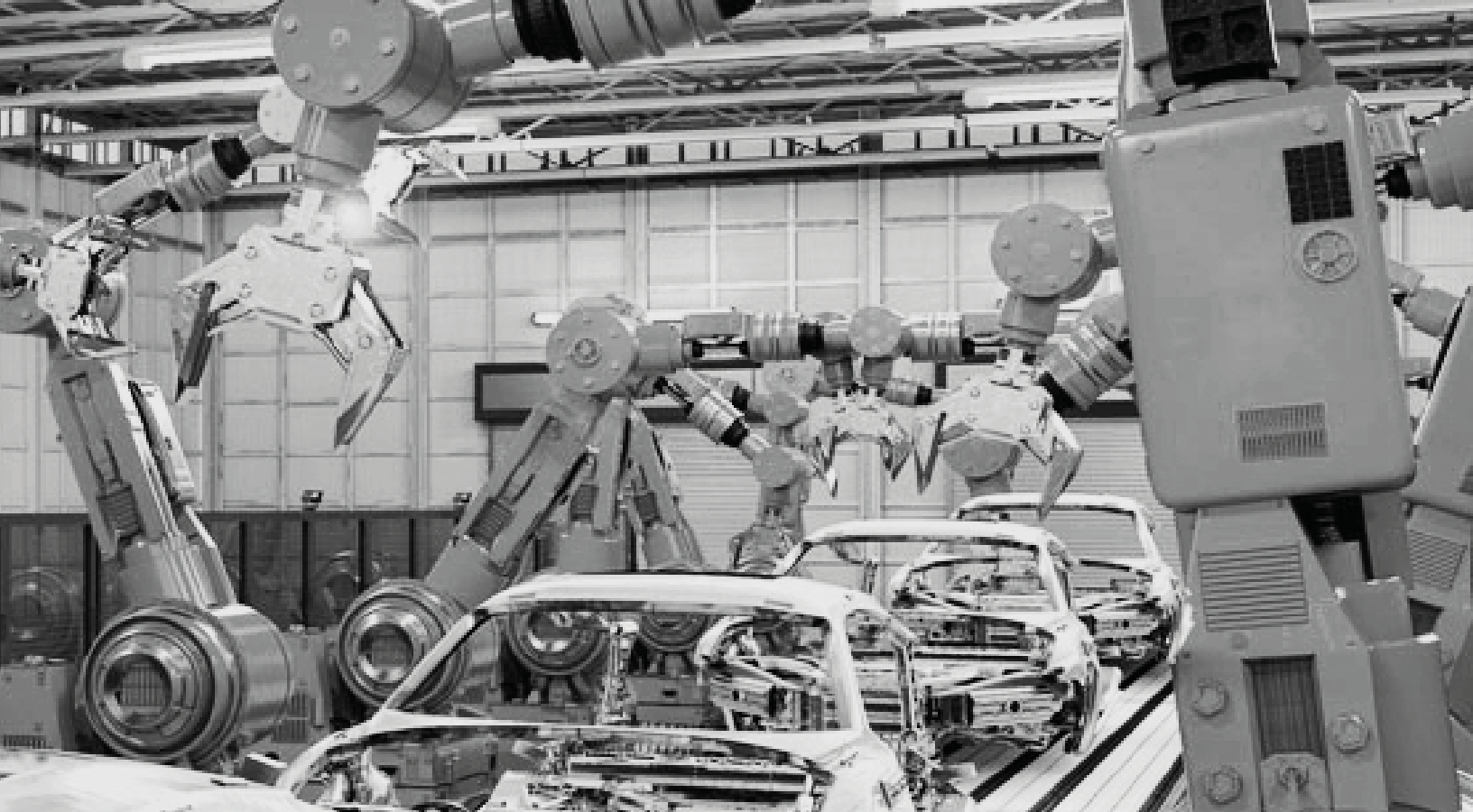


## LGB – ELP solution



## Current process and timing for actual Xborder Client





**SB** Logistics

[sales@sbgroun.com.mx](mailto:sales@sbgroun.com.mx)  
[salesusa@sbgroun.com.mx](mailto:salesusa@sbgroun.com.mx)

